

OWNER'S MANUAL

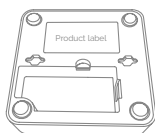
Version 1.0

Product description

The Gateway is the core module of the ZigBoat™ wireless and remote control system. It's an open platform that can be integrated and expanded with unlimited ZigBoat™ additional sensors and features

Precautions

- Do not remove the product label as it contains important information.



Getting started

- Connect the power cable to the ZigBoat™ Gateway.
- Connect the power supply to a battery bank (9-36 Vdc).

NOTE: Minimum section cable: 1.5 mm² (for cable up to 5m). Minimum section cable: 2.0 mm² (for cable between 5 to 10m)

- Download the ZigBoat™ App to your device from App Store (for iOS devices) or from Google Play (for Android devices). For Android version only; download the "Barcode Scanner" App.

CONNECTING THE ZIGBOAT™ GATEWAY

When the ZigBoat™ Gateway is turned on, the green LED blinks and, after approximately 4-5 minutes, it will start an access point named "Zigboat-xxxx" (fig.1) where xxxx is the serial number of the Gateway. Connect your phone/tablet to the Wi-Fi network "Zigboat-xxxx".

NOTE: the Wi-Fi network "Zigboat-xxxx" is password protected. The default password is 12345678. We suggest to change the password using at least 8 alphanumeric characters (no special characters). Make sure to remember your password if it is changed.

Open the ZigBoat™ App, go to the ZB Gateways menu and select the QR code button (fig. 2) (or you can select the + button and then select the QRcode button (fig.3), scan the QR code on the back of the ZigBoat™ Gateway and press "Save". You can change the devices name by selecting "Name" (fig. 4)



Fig 1

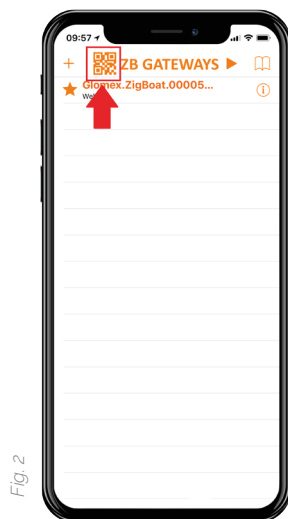


Fig 2

Fig 3

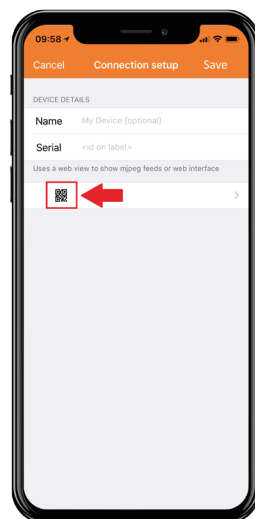


Fig 4

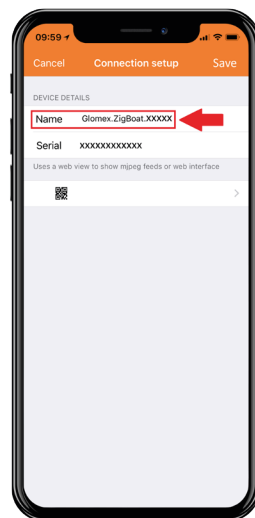


Fig 5

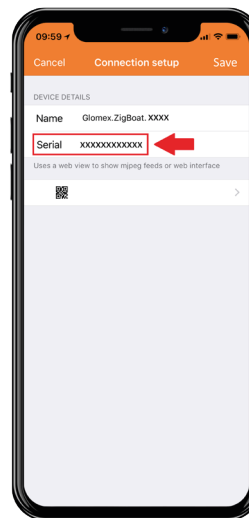


Fig 6

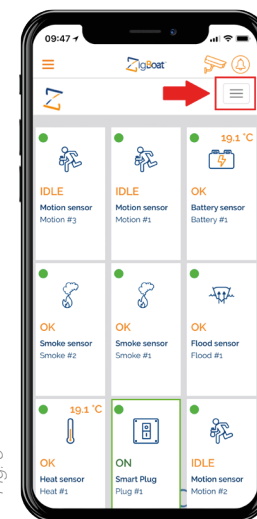


Fig 7



To receive push notifications from your ZigBoat™ sensors you must connect the Gateway to an internet network.

OPTIONAL INTERNET CONNECTIONS:

- Connect the ZigBoat™ Gateway to the WiFi network of weBBoat 4G Plus (optional) or to a known external WiFi network (for example Marina etc). Select the menu button on the top right (fig. 6), then select SETTINGS tab. On the STA MODE tab (fig. 7), click on the button "Wi-Fi scan". Choose the Wi-Fi network you want to connect to, enter the password (if needed) and then press the button "Yes, proceed". Now, the ZigBoat™ Gateway is connected to the internet and can send you push notifications if the connected sensors detect a critical event.

NOTE: After this procedure, close the App, wait a few minutes and open the App again.

- Insert the optional 3G USB dongle (code ZB210) in the USB port on the back of the Gateway.

- Use an Ethernet cable to connect the ZigBoat™ Gateway to an internet-connected router.

NOTE: The gateway should not be connected directly to the PC.

NOTE: Alternately, you can add manually the Gateway by entering in the SERIAL field the Serial Number and the Install code (separated by -) which are on the Gateway's label (fig. 5). You should assign a custom name to the Gateway filling the NAME field.

SSID AND PASSWORD SETTING

You can customize the name of your ZigBoat™ Wi-Fi network (SSID) and its password.

SSID setting

Select the menu button on the top right (fig. 6), then select the SETTINGS tab (fig. 8). On the Wi-Fi settings tab, fill in the SSID field with your customized name (fig. 9). Please don't use special characters.

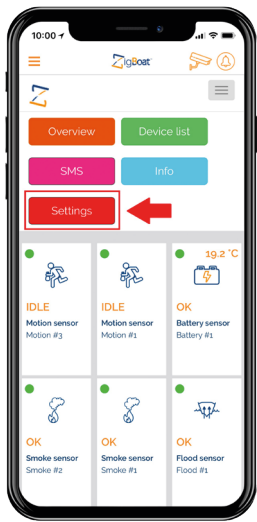


Fig. 8

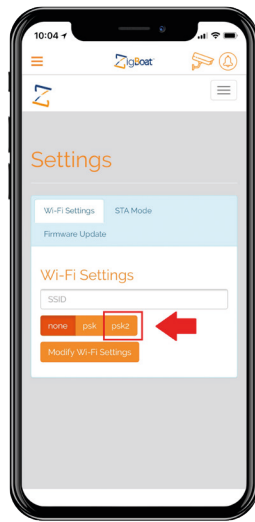


Fig. 10



Fig. 9

Password setting

Select PSK2 button (recommended) (fig. 10) and enter a new password. It's possible not to set the password by selecting "None"

NOTE: the password must have at least 8 alphanumeric characters (no special characters)

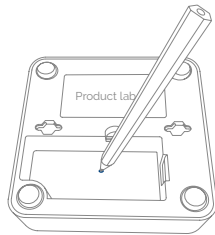
IMPORTANT: We recommend not to remove the password as unauthorized users might have access to the settings of your ZigBoat™ if the network is not protected.

Resetting

A factory reset is needed to remove abnormal behavior.

STEPS FOR RESETTING

1. Use a pen and hold down the reset button as indicated in the picture.
2. Release the pen again when the LED on the front panel starts to flash continuously.
3. The system will reboot and after 4-5 minutes the system will be started again.



Disposal

- Dispose the product properly at the end of life. This is electronic waste which should be recycled.

CE certification

The CE mark affixed to this product confirms its compliance with the European Directives which apply to the product and, in particular, its compliance with the harmonized standards

and specifications.



IN ACCORDANCE WITH THE DIRECTIVES

- Radio Equipment Directive 2014/53/EU
- EMC Directive 2014/30/EU
- RoHS Directive 2011/65/EU

Other certifications

- ZigBee® certified



FCC statement

Changes or modifications to the equipment not expressly approved by the party responsible for compliance could void the user's authority to operate the equipment.

NOTE: This equipment has been tested and found to comply with the limits for a Class B digital device, pursuant to Part 15 of the FCC Rules. These limits are designed to provide reasonable protection against harmful interference in a residential installation. This equipment generates, uses and can radiate radio frequency energy and, if not installed and used in accordance with the instructions, may cause harmful interference to radio communications. However, there is no guarantee that interference will not occur in a particular installation.

If this equipment does cause harmful interference to radio or television reception, which can be determined by turning the equipment off and on, the user is encouraged to try to correct the interference by one or more of the following measures:

- Reorient or relocate the receiving antenna.
- Increase the separation between the equipment and receiver.
- Connect the equipment into an outlet on a circuit different from that to which the receiver is connected.
- Consult the dealer or an experienced radio/TV technician for help.

This device complies with FCC RF radiation

exposure limits set forth for an uncontrolled environment. The antenna used for this transmitter must be installed to provide a separation distance of at least 20 cm from all persons and must not be co-located or operating in conjunction with any other antenna or transmitter.

This device complies with part 15 of the FCC Rules. Operation is subject to the following two conditions:

1. This device may not cause harmful interference, and
2. this device must accept any interference received, including interference that may cause undesired operation.

IC statement

English

This device complies with Industry Canada's Licence-Exempt RSSs. Operation is subject to the following two conditions:

1. This device may not cause interference, and
2. This device must accept any interference, including interference that may cause undesired operation of the device.

Français

Le présent appareil est conforme aux CNR d'Industrie Canada applicables aux appareils radio exempts de licence. L'exploitation est autorisée aux deux conditions suivantes:

3. l'appareil ne doit pas produire de brouillage;
4. l'appareil doit accepter tout brouillage radioélectrique subi, même si le brouillage est susceptible d'en compromettre le fonctionnement.

ISED statement

Innovation, Science and Economic Development Canada ICES-003 Compliance Label: CAN ICES-3 (B)/NMB-3(B).

Distributed by Glomex Srl
via Faentina 165/G
48124 Ravenna
Italy

All rights reserved.

Glomex assumes no responsibility for any errors, which may appear in this manual. Furthermore, Glomex reserves the right to alter the hardware, software, and/or specifications

detailed herein at any time without notice, and Glomex does not make any commitment to update the information contained herein. All the trademarks listed herein are owned by their respective owners.

Warranty

Glomex guarantees the ZigBoat™ (ZB101) and the Gateway (ZB100) against manufacturing defects for a period of 2 years from date of purchase.

Warranty can be in the form of repair or replacement of the unit if manufacturing defects have been found and are confirmed by Glomex or one of its affiliates. In order to validate warranty, either the original sales receipt or a copy must be provided at the time warranty is requested.

Before returning any items for warranty, please contact the Glomex Customer Service department to receive a RMA which should be completed and sent with the unit to the following address:

GLOMEX S.r.l.
Via Faentina 165/G
48124 Ravenna (Italy)

complete with all the accessories supplied at the time of purchase for shipment.

The serial number must neither be erased nor made illegible, otherwise the warranty will be voided.



Consulta il manuale utente in italiano su:

Consultez le manuel d'utilisation en français sur:

Siehe das deutsche Benutzerhandbuch auf:

Consulte el manual de usuario en español en:

